



2-20

2-22

Note: All kinds of spares & Accessories are available



2-26

2-30 METAL HEAD


 CORDLESS
IMPACT
DRILL
13mm

 CORDLESS
DRILL 2-26


KT-2310


 HEAVY
REVERSIBLE

Note: All kinds of spares & Accessories are available



EID-13



DU-10

Note: All kinds of spares & Accessories are available


 BENCH
DRILL

 MAGNETIC
DRILL

www.kittytools.com AN ISO 9001: 2015 CO. www.kittytools.com

KT-745
DRILL MACHINE 16MM WOLF TYPE

 MODEL KT440
 Drill Capacity 16 mm
 Impact rate 1000 rpm
 Frequency 50 hz , Input 220/240 V
 Power consumption 900W

RATE	SIZE : 4"X24"
8600.00	1640FT. /MIN., MOTOR 11AMP.
	Frequency 50 Hz , Input 220/240 V, 1200 W
	SOUND LEVEL 84 DB,

KT-746
6MM DRILL/SCREW DRIVER

 DRILLING CAPACITY 0-6MM
 REVERSIBLE WITH VARIABLE SPEED
 220/240 V
 POWER INPUT : 250 WATT
 SPEED: 0-4500 RPM, 50-60 Hz

MODEL KT02/6A	RATE
REGULAR	3190.00
MEDIUM	4590.00
HEAVY	5935.00

KT-747
13MM IMPACT DRILL

 DRILLING CAPACITY 0-13MM
 REVERSIBLE WITH VARIABLE SPEED
 AND WITH HAMMER
 220 V, 50-60 Hz
 SPEED: 0-2800 RPM

MODEL	RATE
REGULAR (550 W)	2990.00
MEDIUM (750 W)	3590.00
HEAVY (850 W)	4190.00

KT-748
ROTARY HAMMER

Size : 20 mm (RH-2-20) 850 (W), 220 (V), 50 (Hz), 880 (Rpm.)

MODEL :	ORDINARY	MEDIUM	HEAVY	REVERSIBLE	METAL HEAD
RATE:	3900/-	5500/-	7500/-	5900/-	7500/-

Size : 26 mm (RH-2-26) 950 (W), 220 (V), 50 (Hz), 1100 (Rpm.)

MODEL :	ORDINARY	MEDIUM	HEAVY	METAL HEAD
RATE:	5900/-	7500/-	9500/-	13900/-

Size : 30 mm (RH-2-30) 950 (W), 220 (V), 50 (Hz), 1150 (Rpm.)

MODEL :	METAL HEAD
RATE:	13900/-

KT-748-A
CORDLESS DRILLS

MODEL :	IMPACT DRILL 13MM	HAMMER DRILL 2-26
RATE:	9900/-	19900/-

KT-749
POWER DRILL

Size	Rate
10 mm KT-2310 370 (W), 220 (V),50 (Hz),2600 (Rpm)	1690/-
10 mm KT-2310 370 (W), 220 (V),50 (Hz),2600 (Rpm)	1890/- (HEAVY)
10 mm KT-AED10 370 (W), 220 (V),50 (Hz),2800 (Rpm)	2890/- (REVERSIBLE)

KT-750
POWER DRILL

Size	Rate
13 mm KT-DU10 550 (W), 220 (V), 50 (Hz),2800 (Rpm)	3595/-
13 mm KT-EID13 550 (W), 220 (V), 50 (Hz),1250 (Rpm)	3795/- (Hammer)

KT-751
STAND DRILL MACHINE
BENCH DRILL MACHINE

MODEL :	RATE :
REGULAR 350W (13mm)	19900/-
HEAVY 450W (13mm)	25900/-

MAGNETIC DRILL MACHINE

MODEL :	RATE :
680W (12mm)	28900/-
900W (16mm)	35900/-
1500W (23mm)	53900/-


**HAMMER DRILL
26B SDS (BOTTLE)**
**SDS + HAMMER DRILL
26MM (26RE)**

EXTRA HEAVY
REGULAR

www.kittytools.com AN ISO 9001: 2015 CO. www.kittytools.com
KT-752
DEMOLITION HAMMER (5 KG.)

MODEL No. 0810
 Drill Capacity 17 mm
 impact rate 2900 bpm
 frequency 50 hz
 input 220 V
 Power consumption 900W

QUALITY	RATE
ORDINARY	8000.00
MEDIUM	8800.00
HEAVY	9800.00

KT-753
DEMOLITION HAMMER (7 KG.)

MODEL No. 0835
 Drill Capacity 17 mm
 impact rate 2900 rpm
 frequency 50 hz
 input 220 V
 Power consumption 1100W

QUALITY	RATE
ORDINARY	9000.00
MEDIUM	9800.00
HEAVY	10800.00

KT-754
DEMOLITION HAMMER (8 KG.)

MODEL No. 0840
 Drill Capacity 17 mm
 impact rate 3500 rpm
 frequency 50 hz
 input 220 V
 Power consumption 1100W

QUALITY	RATE
ORDINARY	10900.00
MEDIUM	11900.00
HEAVY	12900.00

KT-755
DEMOLITION HAMMER MINI 11E SDS (11 KG.)

MODEL No. 0845A
 Drill Capacity 18 mm
 impact rate 3800 rpm
 frequency 50 hz
 input 220 V
 Power consumption 1250W

QUALITY	RATE
ORDINARY	11900.00
MEDIUM	12900.00
HEAVY	13500.00

KT-756
DEMOLITION HAMMER 11E (11 KG.)

MODEL No. 0845A
 Drill Capacity 18 mm
 impact rate 1000-2250 rpm
 frequency 50 hz
 input 220 V
 Power consumption 1500W

QUALITY	RATE
ORDINARY	19900.00
MEDIUM	21900.00
HEAVY	24900.00

KT-757 HAMMER DRILL 26B SDS (BOTTLE)

MODEL No. 26B	QUALITY	RATE
Drill Capacity 26 mm	ORDINARY	8400.00
impact rate 3200 rpm	MEDIUM	9400.00
frequency 50 hz	HEAVY	10900.00
input 220 V		
Power consumption 750W		

SDS + HAMMER DRILL 26MM (26RE)

MODEL No. 26RE	QUALITY	RATE
Drill Capacity 26 mm	ORDINARY	8900.00
impact rate 3200 rpm	MEDIUM	9900.00
frequency 50 hz	HEAVY	10900.00
input 220 V		
Power consumption 850W		

KT-758
DEMOLITION HAMMER (16 KG.) 65 MM

MODEL No. 65A
 Drill Capacity 18 mm
 impact rate 1400 rpm, frequency 50 hz
 input 220 V, Power consumption 1800W
 Flat & Bullpoint Chisel set for
 demolition hammer 30x410mm ph 65A

QUALITY	RATE
REGULAR	11500.00
MEDIUM	12500.00
HEAVY	15900.00
EXTRA HEAVY	22500.00

KT-759
PETROL JACK HAMMER

2 STROKE/52CC
 FUEL-EFFICIENT
 BIG POWER
 2100W/6500r/min

RATE
 53900.00

DELUX ECO



CM-4 SA

CM-4 SB



CM-5



CM-6

Note: All kinds of spares & Accessories are available



A

B

C

Note: All kinds of spares & Accessories are available



HEAVY



LG MODEL



RIGID MITER SAW



COMPOUND MITER SAW



www.kittytools.com AN ISO 9001: 2015 CO. www.kittytools.com

KT-760

MARBLE CUTTER

Size	IMPORTED	INDIAN (ECO)	DELUX
4" (100mm)			
CM4-SA(100mm)	2990/-	3400/-	3599/-
CM4-SB(100mm)	3150/-	3590/-	3999/-
5" (125mm)	4500/-	5900/-	6900/-
6" (150mm)	5500/-	6900/-	7900/-

4" (100mm)	CM-4	1100 (W), 230 (V), 50 (Hz), 12000 (Rpm)
5" (125mm)	CM-5	1200 (W), 220 (V), 50 (Hz), 11000 (Rpm)
6" (150mm)	CM-6	1300 (W), 220 (V), 50 (Hz), 8500 (Rpm)

KT-761

ELECTRIC GROOVE CUTTER

POWER INPUT	MODEL: A	BLADE DIAMETER OF 110MM	MODEL: B	MODEL: C
1400 W				
NO-LOAD SPEED 7000(R/MIN)		MAXIMUM CUTTING DEPTH OF 32MM	INDIAN	IMPORTED
BLADE DIAMETER 150 MM	RATE	MAXIMUM CUTTING WIDTH OF 50 MM	RATE	RATE
MAX. CUTTING DEPTH 32 MM	19990.00	NO. LOAD SPEED 10800 RPM		
MAX. CUTTING WIDTH 30 MM		POWER FULL MOTOR OF 1400 WATT	11990.00	9990.00
NET WEIGHT 6.1 KG				

KT-762

CUT OFF MACHINE (CHOPSAW)

Size : 14" (355mm) LG 2300(W), 220 (V), 50 (Hz), 3800 (r/min)

MODEL :	LIGHT	MEDIUM	HEAVY
RATE:	11000/-	13900/-	19900/-

KT-763

MITER SAW

MODEL :	10" MITER SAW	MODEL : 12" MITER SAW	
BLADE DIA METER	255mm	BLADE DIA METER 305mm	
NO. LOAD SPEED	4100 rpm	NO. LOAD SPEED 4000 rpm	
MODEL : 10"	RATE	MODEL : 12"	RATE
RIGID :	19800.00	RIGID :	21500.00
COMPOUND :	24800.00	COMPOUND :	29500.00

KT-764

CORE CUTTER

Size : 8" (200mm) , 3300W,

RATE : 39500/-

KT-765

GASOLINE CUT OFF SAW 14"

SIZE 14" (355MM)	
2 STROKE , 87CC ENGINE WITH AUTO CHOCK,	
RATED POWER 4.3 KW, ENGINE SPEED 9000 RPM	
MAX. SPINDLE SPEED 5350 RPM, ARBOR SIZE 20MM	
MOTOR CYLINDER 87 CM ³	
CUTTING DEPTH 150MM	
	RATE
	99999.00

KT-766

CIRCULAR SLAB CUTTER 14"

BLADE DIA METER	350MM
MAXIMUM CUTTING DEPTH	100MM
DEPTH PER CUT	50MM
VOLTAGE/FREQUENCY	220/240V, 2400W
WEIGHT	8KG
RATE	35900.00

DIAMOND SAW BLADE

EXTRA BLADE	
SIZE : 14 INCHES	18 INCHES
RATE : 3399.00	13900.00

KT-767

FLOOR CUTTING MACHINE

ELECTRIC :	DIESEL ENGINE 10HP (GREAVES)
WATER TANK CAPACITY 40-60 LTR.	PETROL ENGINE 12HP (HONDA)
MOTOR 10HP , 3600RPM, 415V	BLADE DIA METER 450MM
BLADE DIA METER 450MM	MAXIMUM CUTTING DEPTH 100MM
BLADE THICKNESS 3MM	DEPTH PER CUT 50MM
MAX. CUTTING DEPTH 130MM	REGULAR : RATE 259000.00
RATE 159000.00	HEAVY : RATE 359000.00



PLASTIC BODY

Note: All kinds of spares & Accessories are available



5" 125MM

6" 150MM



ELECTRIC



GASOLINE



CORDLESS CHAINSAW



www.kittytools.com AN ISO 9001: 2015 CO.

KT-768

ELECTRIC PLANNER

Size		Rate	HEAVY
82x1 mm	700 (W), 220 (V), 50/60 (Hz), 16000 (Rpm.)	3990/-	6990/-
82x1 mm PLASTIC BODY	740 (W), 220 (V), 50/60 (Hz), 16000 (Rpm.)	5900/-	7900/-
90x2 mm	740 (W), 220 (V), 50/60 (Hz), 16000 (Rpm.)	7890/-	
82mm (Spare Blade)	Ordinary- 159/- Hss- 220/- HcHc- 370/- TCT- 690/-		

KT-769

WOOD CUTTER WITH THALL

5" 125MM	230V/50HZ	RATE	6" 150MM	230/50HZ	RATE
INPUT POWER	1350W	4290.00	INPUT POWER	1800W	6990.00
NO LOAD SPEED	12000 RPM		NO LOAD SPEED	7500 RPM	
DIA OF BLADE	125MM		DIA OF BLADE	150MM	

KT-770

CIRCULAR SAW 185MM

VOLTAGE/FREQUENCY	220/50HZ	MODEL :	REGULAR	HEAVY	EXTRA HEAVY
INPUT POWER	1250W	RATE :	5890.00	6890.00	7800.00
NO LOAD SPEED	4900 RPM				
DIA OF BLADE	180/185MM				

KT-771

ELECTRIC ROUTER 12MM

VOLTAGE/FREQUENCY	220/50HZ	IMPORTED		INDIAN	
		SIZE	RATE	SIZE	RATE
INPUT POWER	1200W	8MM	6400.00	8MM	7400.00
NO LOAD SPEED	23000 RPM	12.5MM	6800.00	12MM	7800.00

KT-772

WOOD TRIMMER (PALM ROUTER)

COLLET SIZE : 6 MM	MODEL (6MM)	RATE
220/240 V	REGULAR	3990.00
POWER INPUT :350 WATT	MEDIUM	4990.00
SPEED: 3000 RPM	HEAVY	5990.00

KT-773

PETROL / ELETRIC/CORDLESS CHAIN SAW

ELECTRIC 16"/400MM		ELECTRIC 18"/450MM		ELECTRIC 22"/550MM	
SKID LENGTH	400MM	SKID LENGTH	450MM	SKID LENGTH	550MM
RATED OUTPUT POWER	1700W	RATED OUTPUT POWER	1700W	RATED OUTPUT POWER	2400W
VOLTAGE/FREQUENCY	220/50HZ	VOLTAGE/FREQUENCY	220/50HZ	VOLTAGE/FREQUENCY	220/50HZ

PETROL CHAIN SAW

MODEL :	REGULAR	HEAVY GOLD
SIZE	RATE	RATE
18 INCHES	9300.00	15959.00
22 INCHES	9900.00	19600.00
24 INCHES	21500.00	39000.00
30 INCHES	29900.00	49600.00
36 INCHES	39000.00	59600.00

ELECTRIC CHAIN SAW

MODEL :	REGULAR	HEAVY GOLD
SIZE	RATE	RATE
16 INCHES	6999.00	8999.00
18 INCHES	10999.00	12999.00
22 INCHES	13990.00	15999.00

CORDLESS CHAIN SAW

SIZE :	4 INCHES	8 INCHES
RATE :	12990.00	21990.00

KT-774

SABER SAW

1100WATT, VARIABLE SPEED RECIPROICATION SAW NO. LOAD SPEED 0-2800 RPM, STROKE LENGTH 29MM CUTTING CAPACITY (WOOD) 280MM CUTTING CAPACITY (STEEL SECTIONS) & PIPES 100MM CUTTING CAPACITY (PVC) 130MM		MODEL :	RATE
		REGULAR	12990.00
		HEAVY	19990.00

KT-775

JIGSAW

REGULAR	5990/-
METAL HEAD	7990/-

KT-776

SCROLL SAW

SIZE : 16" (85 WATT 230 V)	RATE
THROAT DEPTH : 400MM	16950/-
CUTTING HIEGHT : 50MM	
BLADE SIZE : 180MM	


KT-801

KT-6-100

G 10SS

PDA-100

CORDLESS ANGLE GRINDER

AG-5

AG-6

AG-7

CP-7

4"
5"

DIE GRINDER CHUCK TYPE

DIE GRINDER DRILL TYPE
www.kittytools.com AN ISO 9001: 2015 CO. www.kittytools.com
KT-777
ANGLE GRINDER (110MM)
Size : 4" (100mm) KT-801 950 (W), 220 (V), 50 (Hz), 11000 (Rpm)
Size : 4" (100mm) KT-6-100 750 (W), 220 (V), 50 (Hz), 11000 (Rpm)
Size : 4" (100mm) KT-G10SS 650 (W), 220 (V), 50 (Hz), 11000 (Rpm)
Size : 4" (100mm) KT-PDA 100M 705 (W), 220 (V), 50 (Hz), 12000 (Rpm)
SPINDLE THREAD M 10

REGULAR	MEDIUM	EXTRA HEAVY
2890/-	3890/-	4290/-
2690/-	3690/-	4190/-
		3950/-
		4150/-

KT-777-A
CORDLESS ANGLE GRINDER

 Voltage: 20V
 2.0 Ah Battery and Fast Intelligent Charger Included
 No-Load Speed: 8500 RPM
 Disc Diameter: 100 mm

RATE
19900/-

Note: All kinds of spares & Accessories are available

KT-778
ANGLE GRINDER (125mm)
Size : 5" (125mm)
AG-5 1400 (W), 220 (V), 50 (Hz), 11000 (Rpm)
SPINDLE THREAD M 14

REGULAR	MEDIUM	EXTRA HEAVY
5390/-	5990/-	6990/-

Note: All kinds of spares & Accessories are available

KT-779
ANGLE GRINDER (150MM)
Size : 6" (150mm)
KT-AG-6 2200 (W), 220 (V), 50 (Hz), 7500 (Rpm)
SPINDLE THREAD M 14

REGULAR	MEDIUM	EXTRA HEAVY
8500/-	9590/-	11500/-

Note: All kinds of spares & Accessories are available

KT-780
ANGLE GRINDER (180MM)
SIZE: 7" (180MM) AG-7 2400 (W) 8500 RPM,
Disc Diameter 180 mm, Weight (Kgs) 11 Kg
SPINDLE THREAD M 14

REGULAR	MEDIUM	EXTRA HEAVY
9500/-	10590/-	12500/-

Note: All kinds of spares & Accessories are available

KT-781
CAR POLISHER (180 MM)
SIZE: 7" (180MM) CP-7 1500 (W) 600-3000RPM,
Disc Diameter 180 mm, Weight (Kgs) 11 Kg
SPINDLE THREAD M 14

REGULAR	MEDIUM	EXTRA HEAVY
6990/-	7990/-	8990/-

KT-782
STRAIGHT GRINDER
MODEL (4 ")
REGULAR
MEDIUM
HEAVY
RATE
5990.00
7990.00
9990.00
MODEL (5 ")
REGULAR
MEDIUM
HEAVY
RATE
6990.00
9990.00
13900.00

Note: All kinds of spares & Accessories are available

KT-783
DIE GRINDER
MODEL
REGULAR
MEDIUM
HEAVY
RATE
2990.00
3990.00
5990.00
**DIE GRINDER CHUCK TYPE
6MM CAPACITY 400W, 220-240V**

MODEL	RATE
DIA GRINDER CHUCK TYPE	6990.00

DIE GRINDER DRILL TYPE

MODEL	RATE
DIA GRINDER DRILL TYPE	3590.00

Note: All kinds of spares & Accessories are available

www.kittytools.com AN ISO 9001: 2015 CO. www.kittytools.com


KT-784
BELT SANDER (CHAIN SAW TYPE)

MODEL NO. 9031
 SPECIFICATION:-
 BELT SIZE - 1-1/4" X 21"
 BELT SPEED (VARIABLE SPEED) - 656 - 3,280 FT./MIN
 AMPS - 5
 CORD LENGTH - 8.2 FT. (2.5 M)
 DIMENSIONS - 15 X 6.7 X 3.5 INCHES

RATE :
14900.00


KT-785
BELT SANDER (PLANNER TYPE)

SIZE : 4"X24"
 1640FT./MIN., MOTOR 11AMP.
 Frequency 50 Hz , Input 220/240 V, 1200 W
 SOUND LEVEL 84 DB,

RATE :
15900.00


KT-786
ROUND ORBIT SANDER
ELECTRIC RATE : 4600.00
ELECTRIC RATE : 13900/-
ELECTRIC RATE : 15900.00

SIZE : 5" (125mm)
 Frequency 50 Hz , Input 220/240 V, 500 W
 No. Load Speed 7000-14000 RPM
 Belt Size 125mm

SIZE : 6" (150mm)
 Frequency 50 Hz , Input 220/240 V, 700 W
 No. Load Speed 4000-10000 RPM
 Bed Size 150mm

SIZE : 7" (180mm)
 Frequency 50 Hz , Input 220/240 V, 850 W
 No. Load Speed 1500-2700 RPM
 Pad Size 180mm

125MM
150MM
180MM

KT-787
CORDLESS ROUND ORBIT SANDER

CORDLESS ROUND ORBIT SANDER
 SIZE : 5"
 Voltage: 20V
 No-load speed: 10,000/min
 Bottom bass: 125mm
 1x Battery and fast charger included

RATE : 13900/-

PNEUMATIC

KT-788
PNEUMATIC WALL SANDER

PNEUMATIC (Air Orbit)
 SIZE : 6"
 Free Speed (rpm) 10500
 Air Consumption (cfm) 3
 Operating Pressure (Psi) 90
 Weight (kg.) 0.9
 Air Exhaust Rear 360° Exhaust

RATE : 13500/-


KT-789
WOOD SANDER
PALM SANDER

RATE
4800.00

ORBITAL SANDER

RATE
5600.00

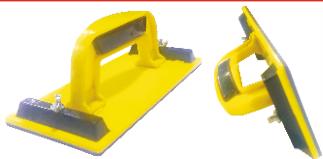
MODEL NO. FSR-200
 SIZE : 4"x4.25"
 Frequency 50 Hz , Input 220/240 V, 200 W
 No. Load Speed 14000 RPM
 Bed Size 114x102mm

MODEL NO. 2091-K
 SIZE : 4" x 6"
 Frequency 50 Hz , Input 220/240 V, 500 W
 No. Load Speed 10000 RPM
 Bed Size 93x185mm


KT-790
CORDLESS TILE VIBRATION SUCTION CUP

SUITABLE FOR TILE SIZE : 60cmx60cm, 120cmx120cm
 Frequency 50 Hz , Input DC16.5 V, 260 W
 No. Load Speed 12000 RPM
 Bed Size 114x102mm

RATE
11995.00


KT-791
HAND SANDER

RATE
350.00


KT-792
BURNISHING POLISHING MACHINE

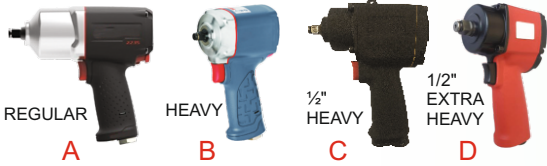
Impact rate 600-3000 rpm
 Frequency 50/60 hz
 Input 220 V
 Power consumption 1400W

MODEL
REGULAR
HEAVY

RATE
19900.00
29900.00



8MM IMPACT DRIVER 1/2" REGULAR 1/2" HEAVY


 REGULAR HEAVY 1/2" HEAVY 1/2" EXTRA HEAVY
A B C D

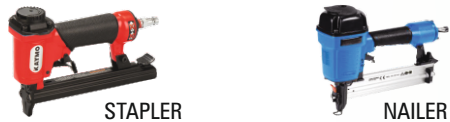

REGULAR CORDLESS IMPACT WRENCH HEAVY CORDLESS IMPACT WRENCH



18MM" HEAVY 18MM" EXTRA HEAVY



3/4" HEAVY 3/4" EXTRA HEAVY


STAPLER NAILER


1" REGULAR 1" HEAVY 1" E. HEAVY FOR TRUCKS


ELECTRIC PNEUMATIC REGULAR PNEUMATIC HEAVY

REGULAR HEAVY

A B

www.kittytools.com AN ISO 9001: 2015 CO.

KT-793 ELECTRIC IMPACT WRENCH
SIZE: 8MM 12 MM (REGULAR) 12MM (HEAVY)
RATE : 6900/- 7990/- 8990/-
KT-794 PNEUMATIC IMPACT WRENCH
SIZE: 10 MM RATE SIZE: 12 MM
A). REGULAR : 9900/- C). HEAVY : 9900/-
B). HEAVY : 7990/- D). EXTRA HEAVY : 11990/-
KT-795 CORDLESS IMPACT WRENCH
CORDLESS RATE
REGULAR 10990/-
MEDIUM 11990/-
HEAVY (21V) 13990/-
KT-796 PNEUMATIC IMPACT WRENCH
SIZE: 18 MM
HEAVY : 13900/-
EXTRA HEAVY : 19990/-
KT-797 PNEUMATIC IMPACT WRENCH
SIZE: 20 MM
HEAVY : 21900/-
EXTRA HEAVY : 24990/-
KT-798 PNEUMATIC STAPLER & NAILER
ITEM : STAPLER NAILER
REGULAR : 5390/- 5990/-
HEAVY : 8590/- 9590/-
KT-799 PNEUMATIC IMPACT WRENCH
SIZE: 20 MM
REGULAR : 35900/-
EXTRA HEAVY : 45990/-
KT-800 IMPACT WRENCH

MOMENT BOUND 900-1850 NM	REGULAR	MOMENT BOUND 1500-3000 NM	HEAVY
MAX TORQUE 2180MM	RATE	MAX TORQUE 3200MM	RATE
AIR INLET 1/2 INCH,	41900.00	AIR INLET 1/2 INCH,	45900.00
NO. LOAD SPEED 4200 rpm.		NO. LOAD SPEED 3200 rpm.	
BOLT CAPACITY 41MM		BOLT CAPACITY 48MM	
ANVIL SIZE 8"		ANVIL SIZE 9"	
SOCKET SIZE 32MM, 33MM		SOCKET SIZE 32MM, 33MM	
WEIGHT 14KG.		WEIGHT 16.1KG.	
MECHANISM PIN LESS HAMMER		MECHANISM PIN LESS HAMMER	

KT-801 SOCKET IMPACT WRENCH KIT
SET OF 17 PCS., 1/2" SQUARE DRIVE
 MAX TORQUE 340MM
 WORKING PRESSURE 90 PSI(6.3 BAR)
 AIR INLET 1/4 INCH, NO. LOAD SPEED 7000 rpm.
 AVERAGE AIR CONSUMPTION 7.5 CFM
 INTERNAL DIA METER AIR HOSE 3/8 INCH, WEIGHT 2.18 KG.

SET OF 17 PCS. 1/2"
ELECTRIC : 10990/-
PNEUMATIC REGULAR : 13999/-
PNEUMATIC HEAVY : 23999/-
KT-802 LABOUR SAVING MACHINE
RAGULAR : 5999/-
HEAVY : 7999/-
IMPACT WRENCH SOCKETS
KT-803 A 24-33 MM : 935/-
34-41 MM : 959/-
UNIVERSAL JOINT
B UNIVERSAL JOINT
FOR 1" IMPACT WRENCH : 1990/-


REGULAR
HEAVY

REGULAR
MEDIUM
HEAVY

MINI (HANDY) 3.8V
HEAVY
COMPLETE KIT

REGULAR
HEAVY

8" EGULAR
12" HEAVY

A
D
B
E
C
F

CORDLESS BLOWER

SPARE ROD
REGULAR
MEDIUM
HEAVY

www.kittytools.com

AN ISO 9001: 2015 CO.

KT-804
HOT AIR GUN

220/240 V
 POWER INPUT : 2000 WATT
 350°C 550L/MIN
 550°C 550L/MIN
 50/60 Hz

IMPORTED	RATE	INDIAN	RATE
REGULAR	1790.00	REGULAR	1990.00
MEDIUM	2790.00	MEDIUM	2990.00
HEAVY	3390.00	HEAVY	3590.00
E-HEAVY	3890.00	E-HEAVY	4590.00

KT-805
SCREW DRIVER
ELECTRIC

ORDINARY	MEDIUM	HEAVY
2800/-	3800/-	4800/-

KT-806
CORDLESS SCREW DRIVER
(HANDY) CORDLESS FOR ELECTRONIC USE
DUAL BATTERY

MINI (3.8V)	6.2V	CORDLESS (12V)	CD 12V 24PCS. KIT
RATE : 3395/-	2690/-	ORDINARY 3800/-	MEDIUM 4800/-
		HEAVY 5800/-	RATE : 4990.00

KT-807
CORDLESS SCREW DRIVER HEAVY BATTERY

REGULAR	MEDIUM	HEAVY	REGULAR	MEDIUM	HEAVY
14.4 V	14.4 V	14.4 V	18 V	18 V	18 V
9900/-	11900/-	19900/-	14900/-	16900/-	24900/-

KT-808
PLASTIC SEAL MACHINE

REGULAR	HEAVY	REGULAR	HEAVY
8 INCHES	8 INCHES	12 INCHES	12 INCHES
3900/-	4900/-	6900/-	8900/-

KT-809
ELECTRIC HAND BLOWER
MODEL IMPORTED

A). REGULAR	1395/-
B). REGULAR VARIABLE SPD.	1890/-
C). HEAVY VARIABLE SPD.	2890/-

MODEL INDIAN

D). REGULAR	1935/-
E). REGULAR VARIABLE SPD.	2400/-
F). HEAVY VARIABLE SPD.	3390/-

KT-810
CORDLESS BLOWER

WITH LITHIUM BATTERY (21V)
 LONG LASTING

RATE
 9990.00

KT-811
ELECTRIC PAINT MIXER
MODEL:

REGULAR (800V)	5900.00
MEDIUM (1200V)	7990.00
HEAVY (1400V)	13990.00
SPARE ROD :	1195.00

MODEL:

REGULAR: (800V), 680 RPM,
 PADLE DIA. 160MM (M-12)
 MEDIUM (1200V) 680 RPM,
 PADLE DIA. 160MM (M-12)
 HEAVY (1400V) 680 RPM,
 PADLE DIA. 160MM (M-14)


A
REGULAR
IMPORTED

B
REGULAR
INDIAN

C
MEDIUM
INDIAN

D
HEAVY
INDIAN

E
EXTRA HEAVY
INDIAN

F
PROFESSIONAL
INDIAN


SPARE NOZZLE


A

B

C

D

A

B

C

 SPARE
NOZZLE

ELECTRIC

**REGULAR
DIESEL ENGINE**

HEAVY

www.kittytools.com

AN ISO 9001: 2015 CO.

www.kittytools.com

KT-812
CONCRETE VIBRATOR

220/240 V	MODEL	POWER INPUT	SPEED	RATE
SPEED: 4000 RPM 50-60 Hz	(A). REGULAR IMP.	(650 W)	3800RPM	3990.00
	(B). REGULAR IND.	(800 W)	4000 RPM	4990.00
	(C). MEDIUM IND.	(1300 W)	4600 RPM	5990.00
	(D). HEAVY IND.	(2000 W)	4800 RPM	6990.00
	(E). E- HEAVY IND.	(2200W)	4800 RPM	9990.00
	(F). PROFESSIONAL	(2400W)	4800 RPM	13990.00

KT-813
HI FREQUENCY CONCRETE VIBRATOR

FREQUENCY 50~60Hz, 230V
 VIBORATING AMPLITUDE 1.2MM
 FEEDING HEIGHT 1380MM
 3HP, 18000 RPM, WEIGHT 5.8KG.
 SHAFT LENGTH 1 TO 6 (1, 1.5, 2, 3, 4, 5 & 6)

RATE
 39590.00

KT-814
CONCRETE VIBRATOR SPARE NOZZLE

NEEDLE (SPARE NOZZLE)	RATE	NEEDLE (SPARE NOZZLE)	RATE
(35MM) 1 MTR.	1590.00	(50MM) 1 MTR.	2990.00
(35MM) 1.5 MTR.	1990.00	(50MM) 1.5 MTR.	3590.00
(35MM) 2 MTR.	4450.00	(50MM) 2 MTR.	4990.00
(35MM) 3 MTR.	4990.00	(50MM) 3 MTR.	5990.00

KT-815
ELECTRIC CONCRETE VIBRATOR

MODEL :	RATE
A. REGULAR	17900.00
B. HEAVY	39900.00
C. HEAVY WITH STAND	45900.00
D. EXTRA HEAVY	87900.00

KT-816
DIESEL ENGINE CONCRETE VIBRATOR

A. DIESEL ENGINE	B. DIESEL ENGINE WITH STAND		
RATE : 33590.00	RATE : 45590.00		
C. SPARE NOZZLE	40MM	50MM	60MM
RATE	6990.00	7590.00	8990.00

KT-817
SURFACE PLATE VIBRATOR

ELECTRIC MOTOR 2HP
 SIZE : 24"X18", CAP. : 1-2 TON, WEIGHT APPX. 80 KG.
 POWER : 1-3KV, SPEED M/PIN., VOLTAGE 220
 RATE : 59900.00

DIESEL ENGINE :
 SIZE : 2X3 FEET, CAPACITY : 2-3 TON, WEIGHT APPX. 100 KG.
 POWER : 1-3KV, SPEED M/PIN., VOLTAGE 220
 REGULAR : 78900.00
 HEAVY : 139000.00

DRILL MACHINE STAND

ANGLE GRINDER CUT OFF ADAPTOR

SPARE SLEEVE

SPARE ADAPTOR

SPARE COLLET NUT

COLLET SET COMPLETE WITH 8MM SLEEVE

www.kittytools.com AN ISO 9001: 2015 CO. www.kittytools.com
KT-818
SPARE STANDS FOR DRILL /ANGLE GRINDER MACHINE
DRILL MACHINE STAND
 RATE : 2790.00

ANGLE GRINDER CUT OFF ADAPTOR
 RATE : 2880.00

KT-819
ROUTER COLLET/ ADAPTOR/SPARE SLEEVE
SPARE SLEEVE 8MM
 SUITABLE FOR ENDICO TYPE & KITTY ROUTERS
 RATE : 135.00

SPARE ADAPTOR 8MM
 SUITABLE FOR ENDICO TYPE & KITTY ROUTERS
 RATE : 159.00

SPARE COLLET NUT 8MM & 12
 SUITABLE FOR ENDICO TYPE & KITTY ROUTERS
 RATE : 260.00

COLLET SET COMPLETE WITH 8MM SLEEVE
 SUITABLE FOR ENDICO TYPE & KITTY ROUTERS
 RATE : 395.00

KT-820
ANGLE GRINDER CHAIN SAW ADAPTOR KIT

SIZE	RATE
11.5"	2990/-
16"	3590/-

KT-821
DOOR LOCK INSTALLATION KIT
RATE
 11900.00

KT-822
SCREW DRIVER RIVETER ADAPTOR KIT
RATE
 2690.00

KT-823
SANDING BELT ADAPTOR ATATCHMENT

Specification:
 Belt Sander Attachment Use in Angle Grinder
 Material Aluminum Alloy + Cast Iron Casting
 Cometing Spindle M10
 Fit for M10 Spindle Angle Grinder
 Belt size 540x30mm
 Belt Grit 80 / 120 / 150 / 180 / 240
 Use to Polishing Wood, Metal, Stainless Steel and etc

RATE
 13900.00

KT-824
KEYLESS CHUCK SCREW DRIVER
RATE
 490.00

KT-825
SDS TO DRILL CHUCK ADAPTOR
RATE
 59.00

KT-825-A
TRIMMER TO ROUTER (8MM) ADAPTOR
A RATE
 359.00

B RATE
 459.00

KT-826
DRILL ADAPTOR

(A). FROM DRILL MACHINE TO INDIAN CORE BIT	49.00
(B). FROM DRILL MACHINE TO CUP BRUSH	59.00
(C). FROM ANGLE GRINDER TO IMPORTED CORE BIT	595.00

KT-826-D
DOUBLE BLADE ADAPTOR FOR ANGLE GRINDER

SIZE:	(M10) FOR 4"	(M14) FOR 5"
RATE	220.00	290.00

KT-827
DU-10 DRILL COUPLING

A	B	C
RATE	RATE	RATE
249.00	299.00	399.00